

TECHNO

Technopolymer enclosures

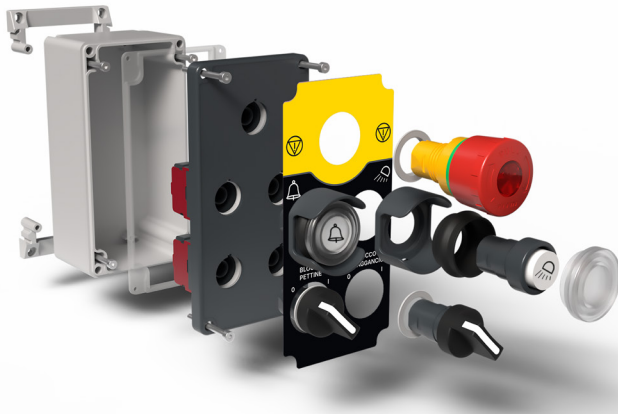


Excellence in Human-Machine Interfaces since 1967

Main Features

TECHNO

Technopolymer enclosures



The Techno range of thermoplastic enclosures has been specifically designed to professionally meet the majority of requirements in the industrial automation sector. The careful selection of materials — such as glass-fibre reinforced polyamide technopolymers — ensures that these enclosures can also be used reliably in harsh and demanding environmental conditions.

The stainless steel fastening screws comply with UNI standards and feature a metric thread with cylindrical head and hexagon socket. They are held in place by the perimeter gasket, which guarantees captive screws and prevents loss during installation or maintenance.

The enclosures are equipped with thermo-rubber gaskets, a technology offering multiple advantages, including:

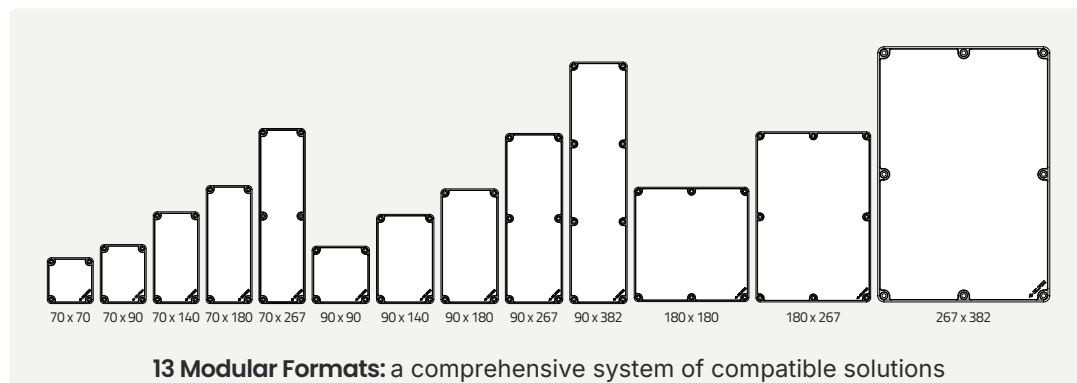
- Elimination of the traditional shape-memory effect
- Absence of joining points
- Single-piece construction, allowing easy replacement

The male-female coupling system between lid and base has been engineered to ensure perfect sealing while preventing incorrect closure if internal components or wiring interfere. The increased wall thickness not only provides excellent mechanical strength, but also allows the direct installation of accessories such as connectors and cable glands after threading.

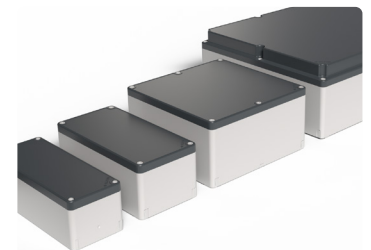
Finally, the bottom of each enclosure is equipped with dedicated supports for mounting additional accessories, such as mounting plates or standard DIN rails.

Thermoplastic enclosures, widely used in industrial electrical applications, are protective housings made from durable, versatile materials. They ensure safety and reliable performance across a wide range of industrial environments.

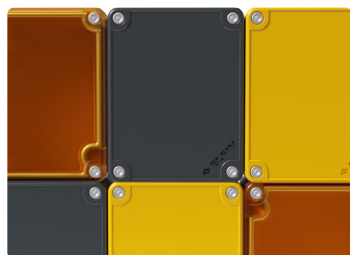
Below are the key features of the new Techno Series:



13 Modular Formats: a comprehensive system of compatible solutions



4 Heights Options
engineered for flexibility
and perfect fit



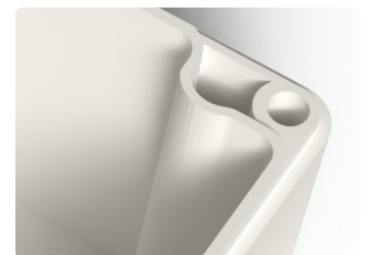
Color Coding
for easy identification
according to safety standards



Fully Customisable
compatible with the entire
range of control auxiliaries



Hermetic Seal
the male-female solution
guarantees the perfect seal



Wall Material & Thickness
together guarantee strength,
lightness and insulation



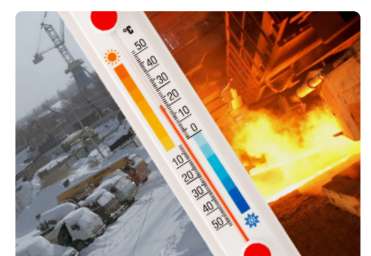
Improved Label Adhesion
low relief containment seat
rough and porous surface



Customisable Graphics
function diversification by
colors, pictograms, markings



Harsh Environment Resistant
thanks to watertightness and
high-performance materials

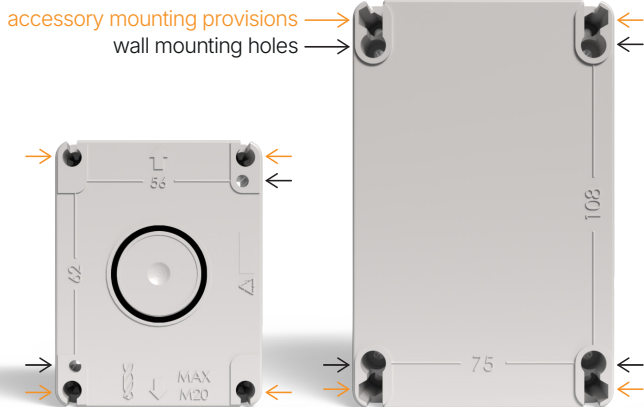


Temperature Resistance
to the extreme variations
in industrial environments

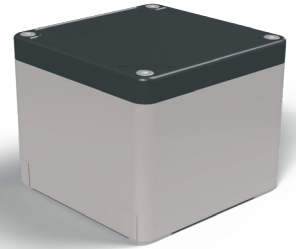
Traditional Mounting

with open enclosure

TECHNO
Technopolymer enclosures



The holes for wall mounting are easily identifiable on the back of the caseback. The distances between the centres for wall mounting are indicated on the rear of the box.



When accessory mounting provisions are not used, they can be easily closed with the supplied plugs.

Patented Accessories

for closed-box installation

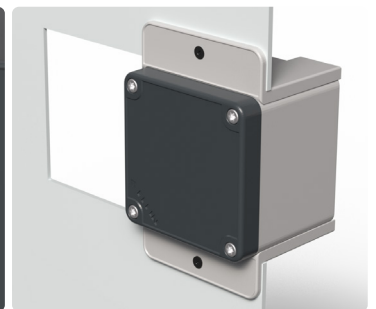
To allow the installation of the enclosure while closed - thus avoiding the risk of damaging the internal wiring - we have designed and patented a wide range of accessories that meet different needs and enable alternative mounting methods. The entire Techno series is made modular thanks to the coupling accessory, which allows the installation of multiple modules in series.



Mounting brackets
for a sturdy hold



Magnetic brackets
movable & space-saving



Wall-mounting brackets
for minimize overall dimensions



Ring Mounting brackets
screw on metal profile



Ring Mounting brackets
strap system on tube



Ring Mounting brackets
hook on wall

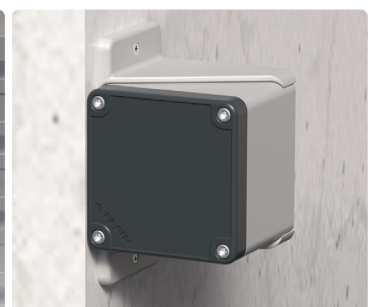
Connection accessory
for series installation



Tandem brackets
modularity and ergonomics



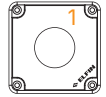
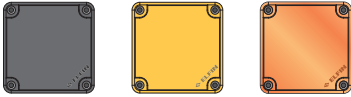
70° Sloped brackets
for greater ergonomics



90° Sloped brackets
for side/underslung mounting

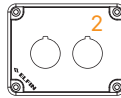
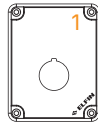
70x70 mm

1 hole Ø22
1 hole Ø30



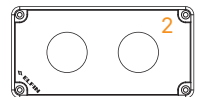
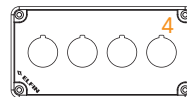
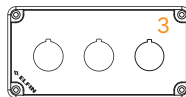
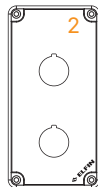
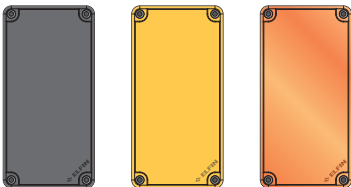
70x90 mm

1 to 2 holes Ø22



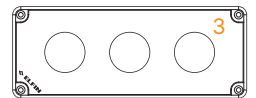
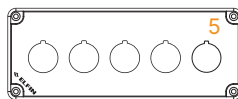
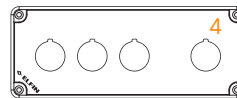
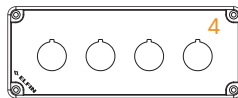
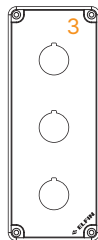
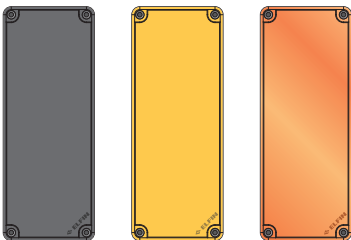
70x140 mm

2 to 4 holes Ø22
2 holes Ø30



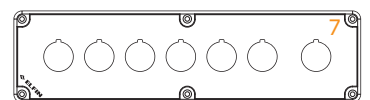
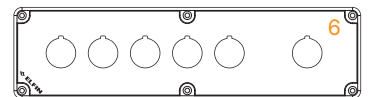
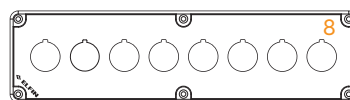
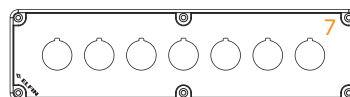
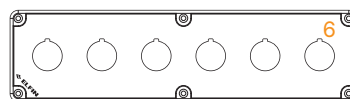
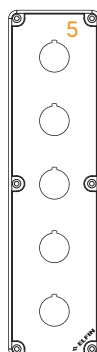
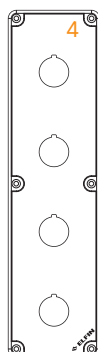
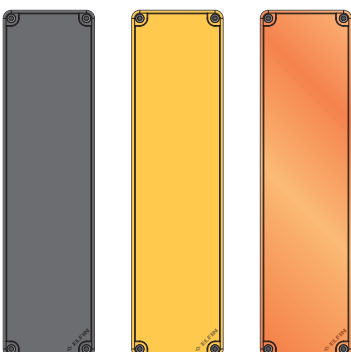
70x180 mm

3 to 5 holes Ø22
3 holes Ø30



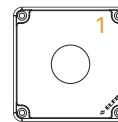
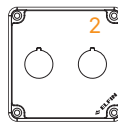
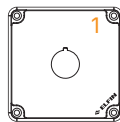
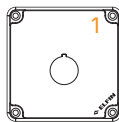
70x267 mm

4 to 8 holes Ø22



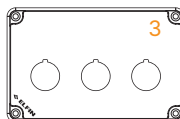
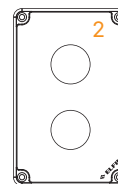
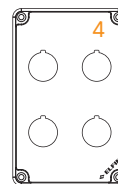
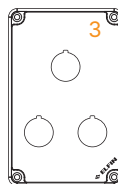
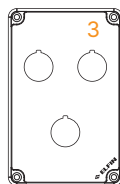
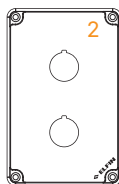
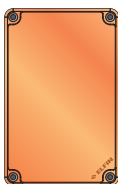
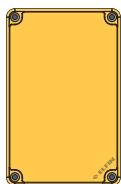
90x90 mm

1 to 2 holes Ø22
1 hole Ø30



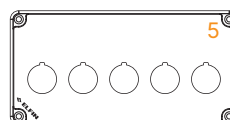
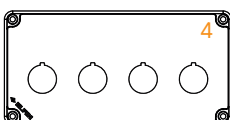
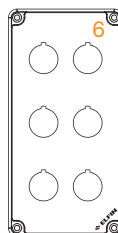
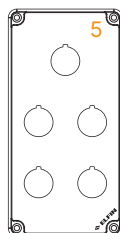
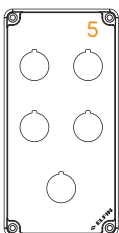
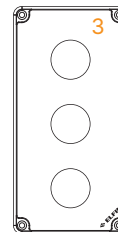
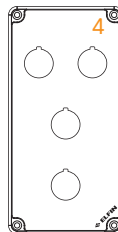
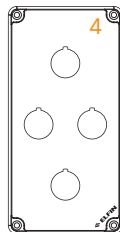
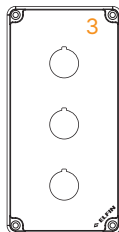
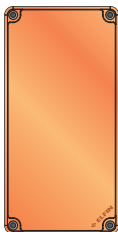
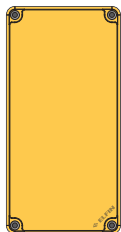
90x140 mm

2 to 4 holes Ø22
2 hole Ø30



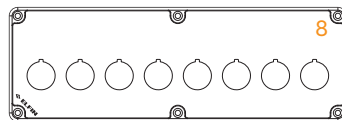
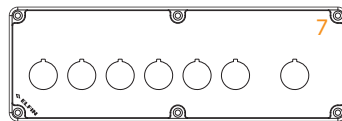
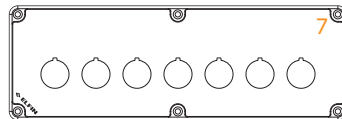
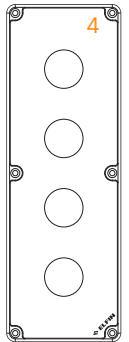
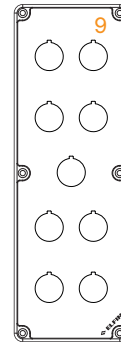
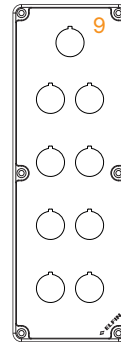
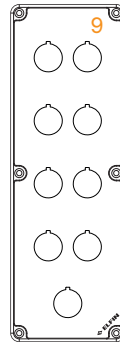
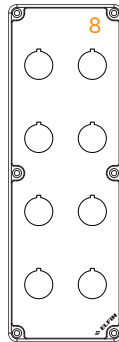
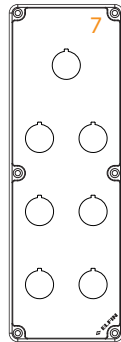
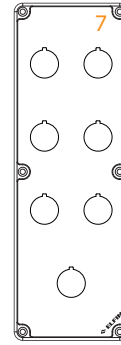
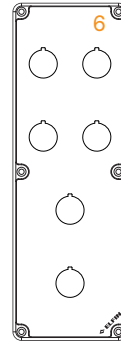
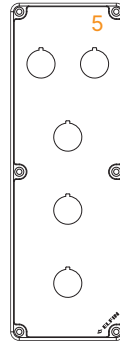
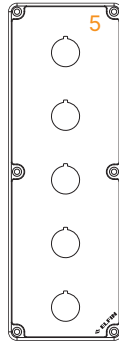
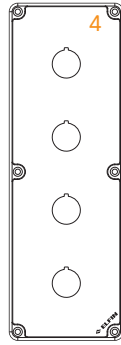
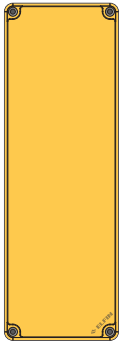
90x180 mm

3 to 6 holes Ø22
3 holes Ø30



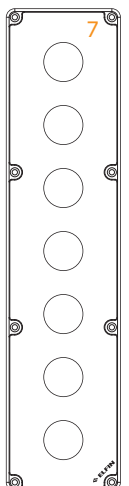
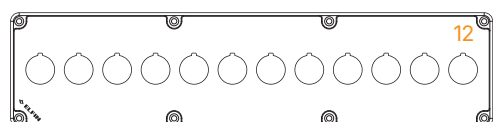
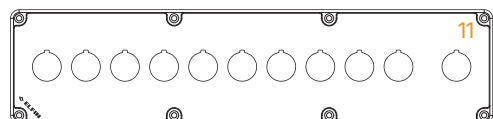
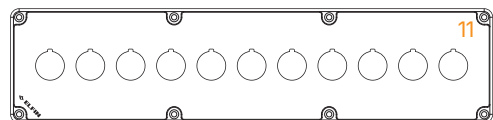
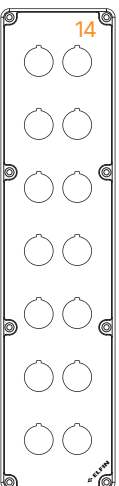
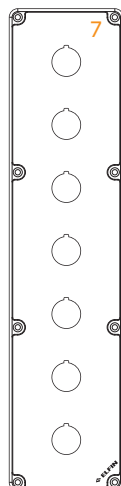
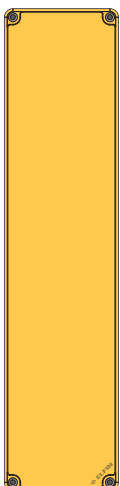
90x267 mm

4 to 9 holes Ø22
4 holes Ø30



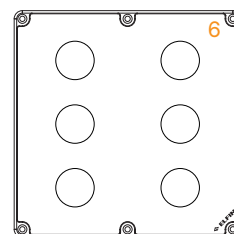
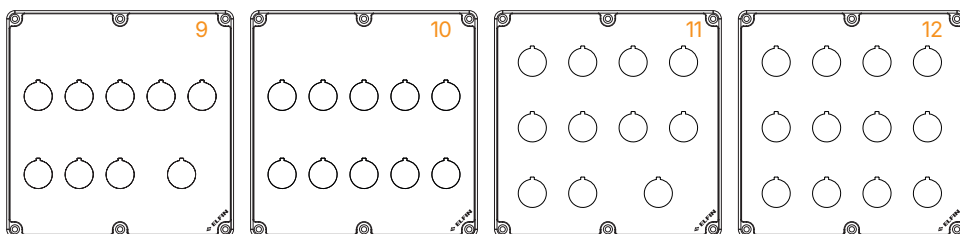
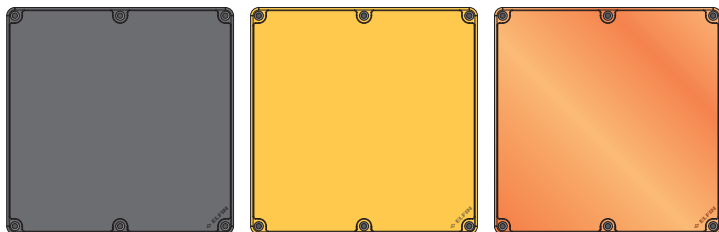
90x382 mm

7 to 14 holes Ø22
7 holes Ø30



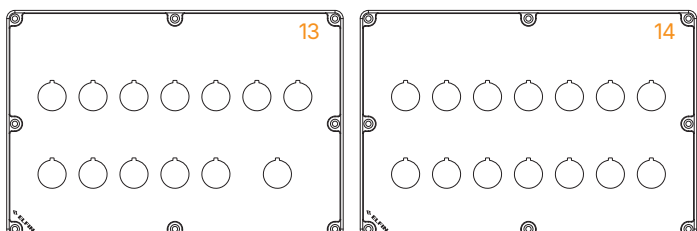
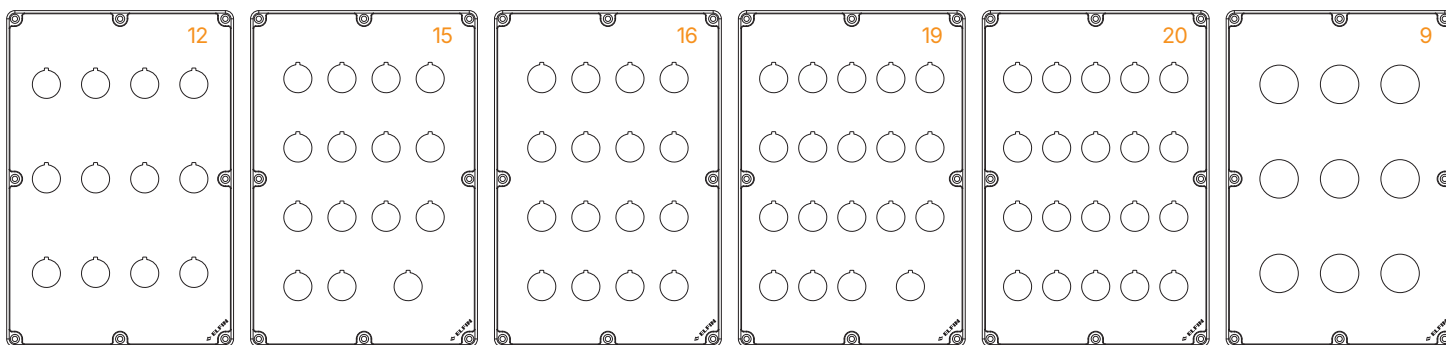
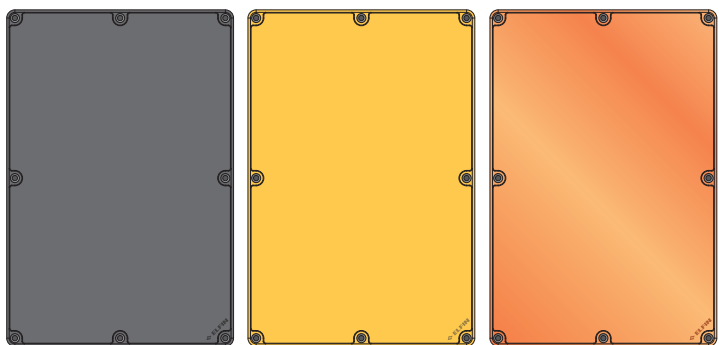
180x180 mm

9 to 12 holes Ø22
6 holes Ø30



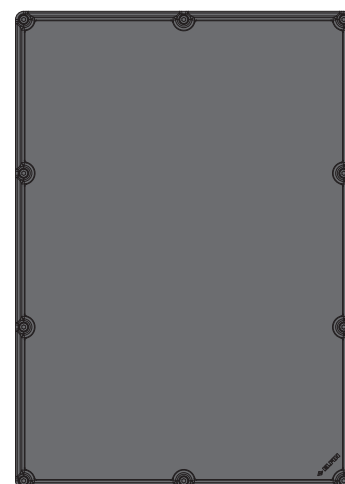
180x267 mm

12 to 20 holes Ø22
9 holes Ø30



TECHNO
Technopolymer enclosures

267x382 mm



A BIG FAMILY

13 sizes:

from 70×70 mm
to 267×382 mm

4 depths:

63 / 74 / 94 / 134 mm

3 colours:

- dark grey
- yellow
- transparent orange

+200 cover variants

for ø22mm & ø30mm
drilling patterns

E like EVERYWHERE

**International
markets:**
CE / UL

Approvals:



Patent Pending



PROTECTION DEGREES

Protection from water/dust:

IP66 / IP67 / IP69 /
NEMA TYPE 4-4X

Protection from impacts:

IK08

FEATURES

Laser markable
cover surface

Label adhesion:
low relief
containment seat

Fastening screws
in stainless steel
(UNI standards)

**Mounting
accessories:**
wide, modular range

**Mounting plates
& DIN rail**
compatible

Technical data sheet



Approvals

Compliance with standards
Operating temperatures
Protection degree (EN 60529)
Protection against impact
Enclosure material
Gasket material
Protection against electric shock
Screw material
Screw type

Screw inserts material ONLY FOR
Screw inserts type ONLY FOR
Tightening torque
Heavy metal-free
PVC-free
Silicon-free
Halogen-free
Combustion behaviour 3.00 mm
Combustion behaviour 0.75 mm
Combustion behaviour
Fitted for outdoor application

CE / UL / CSA

IEC-EN62208, UL508

-35° ÷ +80°C

IP66 - IP67 - IP69

IK08 (IEC-EN62262)

PA Fiber glass reinforced polyamide

TPE Thermoplastic elastometer

Class II (IEC-EN61140)

Stainless steel AISI 304

70 Range: 5X24 inox TORX T15 UNI

90 Range: M04X45

90 Range: Brass / Stainless Steel

90 Range M4X18

1 ÷ 1.5Nm (8.85÷13.3 Lb-in)

yes

yes

yes

yes

5VA (UL94)

V0 (UL94)

960°(IEC-EN60695-2-12)

yes

Legend UL Approval Only

New Elfin Divisione Pulsanti S.r.l.

HEADQUARTERS

Strada Commenda 3/M
10072 Caselle Torinese
Torino - Italy

info@newelfin.com
+39 011 5365000

GOODS RECEIVING & SHIPPING

Strada Commenda 1/O
10072 Caselle Torinese
Torino - Italy



Download Area



www.newelfin.com